



THE SHEPHERD'S VOICE

November 2019

The wind (or spirit) blows where it chooses, and you hear the sound of it, but you do not know where it comes from or where it goes. John 3:8

Have you noticed God's Spirit being active lately? The first time I witnessed God's spirit dwelling where I was, I had no idea what was going on. It was odd and strange. I could not describe what was going on. I'm still not able to explain it eloquently, but I am improving. You know, when God's Spirit is blowing, things suddenly come together like puzzle pieces. Or when God's Spirit is among us, we feel joy and love within us as for the two companions in the Emmaus story in Luke, "our hearts are burning within us." Because God's Spirit is so active and stirring us lately, I cannot help but share with you this story.

A recent time I noticed God's Spirit was at the latest stewardship committee meeting. You probably know that the stewardship committee has been praying and thinking about ways to encourage our members and people in the Lena community to come to Good Shepherd. They have tried sending out cards, giving out window cling-ons, having a confirmation class reunion, and having an ice cream sundae Sunday. The stewardship committee is passionately seeking ways to invite God's children to church. What shall we try next? What would encourage people to come to Good Shepherd? One expressed, "We should have a potluck". Another said, "How about ice cream?" At that moment something clicked. Surely God's Spirit was speaking to us—ice cream works. We recalled the Sundae Fun Day in August, when many of our members from 90+ years old to 3 years old enjoyed ice cream sundaes after worship. Within a few hours we ate 2 buckets of ice cream that day, and it was very good. Then, the committee members began discerning a date for an ice cream sundae Sunday. Out of the blue, someone asked, "When is Martin Luther's birthday?" We looked at each other, and then checked a smart phone. It is November 10th, and it's on a Sunday this year. All the sudden, Martin Luther Birthday Party was set. We will throw a birthday party for Martin Luther with ice cream and cupcakes!

My friends, that's one way God works. God's Spirit appears unexpectedly when God's children gather together. As Jesus said, God's Spirit comes and blows as it pleases. We have no control over how God works in our lives, which is a good thing. I think God's Spirit is like that so that we can continue to experience God's abundant grace in the midst of our busy, stressful, and tiring days. I pray that God's Spirit shows up to you this month so that you may be overwhelmed by the love of God.

Pr. Miho



WEAR YOUR HAT TO CHURCH

Christ the King Sunday November 24



Everyone has a crown on our head because our king Jesus put it on at our baptisms. We will celebrate Christ the King Sunday by wearing hats. Put on your favorite cowboy hat, cap, beanie, beret, bonnet, helmet, cheesehead, or any hat to the worship service.

Do you like to eat and snack?

Well, we are looking for people to sign up for treats for Sunday mornings after our worship service. The same 3-4 people seem to provide almost all of the treats. Please consider signing up to provide some treats. Sign up is by the water bottle in Fellowship Hall.

A Special Thank You

To Beth Martin, Alie Martin, Cindy Doubler, Donna Gullickson and Shirley Fox for taking the quilts to Monroe to be delivered to Lutheran World Relief. Beth, Alie, Shirley, Donna and Cindy loaded all their vehicles and made multiple trips to deliver the quilts. This year they delivered 652 quilts plus 32 children/lap sized quilts to Lutheran World Relief.

Piece Corps Quilters

Come and Celebrate

Martin Luther's 536th Birthday

Date: November 10th (Sunday)

Time: worship 9:30am

(learn about Martin Luther)

Birthday Party 10:45am-1:00pm

(ice cream, cupcakes, & punch)



November Meetings at Good Shepherd

ALL SAINTS SUNDAY November 3rd.

PIECE CORPS QUILTERS will meet Wednesday, November 6th, 13th, 20th and 27th.

CONFIRMATION CLASS will meet Sunday, November 3rd and 17th.

HANNAH CIRCLE will meet Thursday, November 7th at 9:00am at the home of Rene' Johnson.

PARKINSON SUPPORT GROUP will meet Monday, November 11th at 12:00pm for "*Holiday Pot Luck*" There will be no speaker.

HYMN SING at Lena Living Center will be Tuesday, November 12th at 9:45am.

CHURCH COUNCIL meets on Tuesday, November 12th at 6:30pm.

FRIENDSHIP CLUB will meet Thursday, November 14th at noon for a Potluck Dinner & entertainment by "Take Two", Ray and Jane.

CHRIST THE KING HAT SUNDAY, November 24th.

The Good Shepherd Men's Group **will not** be meeting in November or December.



Go & Cheer! Upcoming schedule

**November 8 (Friday) Band and Orchestra Concert
@ Highland, 7:00pm**

November 8 (Friday) Fall HS Play @ Lena, 7:30pm

November 9 (Saturday) Fall HS Play @ Lena, 7:30pm

**If you know upcoming games/meets/concerts/etc.,
please let the office know so that we can go and cheer
for you!**



November Birthdays

<i>11-01</i>	<i>Margery Ference</i>
<i>11-03</i>	<i>Brian Albrecht</i>
<i>11-03</i>	<i>Brianna Lynn Fye</i>
<i>11-04</i>	<i>Kathy Andrews</i>
<i>11-04</i>	<i>Ashtyn Brinker</i>
<i>11-04</i>	<i>Hanna Brinker</i>
<i>11-06</i>	<i>Lorene Solace</i>
<i>11-06</i>	<i>Neal Shumaker</i>
<i>11-06</i>	<i>Dale Andrews</i>
<i>11-07</i>	<i>Amanda Lessman</i>
<i>11-07</i>	<i>Cameron Baker</i>
<i>11-10</i>	<i>Martin Luther</i>
<i>11-13</i>	<i>Brian Eilders</i>
<i>11-15</i>	<i>Sarah (Huber) Andrews</i>
<i>11-18</i>	<i>Deanna Dye</i>
<i>11-19</i>	<i>Lukas Price</i>
<i>11-20</i>	<i>Melinda Reed</i>
<i>11-20</i>	<i>Wade Flack</i>
<i>11-22</i>	<i>Leona Block</i>
<i>11-22</i>	<i>Sue Diddens</i>
<i>11-23</i>	<i>Peggy Roettger</i>
<i>11-28</i>	<i>John Hunzke</i>
<i>11-30</i>	<i>Taylor Patterson</i>
<i>11-30</i>	<i>Alex White</i>

*If we missed your birthday (or someone in your family)
please call the office so that we may update our records!*

Dear Good Shepherd Church Members,

We appreciate the personal items and food items that your church donated to the Lena-Winslow Food Pantry. Your support enables us to take care of our hungry neighbors. Thank you so much for supporting the pantry.

Larry and Judy Buchenau
Food Pantry Directors

On October 14th Good Shepherd hosted a flu shot clinic. There were 12 people who came to the flu clinic to be vaccinated. Thank you to everyone who came to get their flu shots along with the staff from FHN for arranging Flu Shot Clinics for our area.



Christmas Schedule

*Advent and Christmas is around the corner!
Mark your calendar for upcoming events.*

December 1 (Sunday) Advent Fun

decorate the church with Christmas ornaments

December 6 (Friday) Christmas Parade/Walk at downtown, Lena

December 15 (Sunday) Christmas Program

December 24 (Tuesday)

Family Christmas Eve Service

Christmas Eve Candlelight Service

December 25 (Wednesday) Christmas Day Service

December 29 (Sunday) Blue Christmas Service

with blessings of first responders

January 5 (Sunday) Sing Out!

Lessons & Christmas Carols

**Keep an eye on dates and times for Christmas Caroling and
Christmas Tour of Homes.*



Lena Area Church Cooperative

November and December are exciting and busy times for the Lena Area Church Cooperative (LACC). Three of the biggest projects of the year take place during this time, the Thanksgiving food baskets, the Angel Tree and cookies for Lena Lions Operation Good Fellow. The people of Good Shepherd have given generously to these projects in years past and we hope for the same this year also!

The LACC will be giving out Thanksgiving food baskets again this year. The need is becoming greater and this year the LACC is looking at giving out 55+ baskets to families and individuals in need. **The drive for the Thanksgiving food baskets will begin here at Good Shepherd on Sunday, November 3rd and the last day to donate is Sunday November 24th.** We will be accepting monetary donations for the Thanksgiving Baskets. The LACC is able to purchase food baskets for only \$16.00 a piece from the Northern Illinois Food Bank. The food baskets have everything a family will need for a delicious Thanksgiving dinner. A table will be set up in the fellowship hall with a basket for you to leave your monetary donations in. If you have any questions, please contact Shirley Fox or Mary Lloyd.



The LACC will also be sponsoring the Angel Tree. As soon as info becomes available that will be shared in the Sunday bulletins. Stay tuned for that.

And finally the Lena Lions Club has asked the LACC to donate 200dozen cookies for their Operation Good Fellow. Good Shepherd has been asked to donate 30 dozen cookies. A sign-up sheet will be put out later in November for you to indicate how many dozen you can donate.

Monetary donations are always accepted for all projects. Checks can be made payable to the Lena Area Church Cooperative or LACC. Checks can be given to either Shirley Fox or to Mary Lloyd.



Thank you in advance for your love and support to these very worthy causes!

The Good Shepherd cares for us. He gives His Life for us and to us. We give and use our lives in love, care and service of one another.

Practice for the children's Christmas Program will begin on
Sunday, November 10th.

Dear Friends,

Thank you for your generous gift to Lutheran World Relief's Quilt and Kit Shipping Fund! Your donation ensures that LWR Quilts and Kits get into the hands of a person who needs it.

With your help, we have delivered Quilts and Kits to families in Mozambique whose communities were utterly ravaged by Cyclone Idoi. For refugee families, your gift means so much. A School kit can make the difference between getting an education or missing out. A Personal Care Kit helps families provide for basic hygiene needs, freeing up precious resources. Quilts help families through cold winter nights.

On behalf of LWR, our partners and those we serve together, please accept my heartfelt thanks once more for your gift and all that it will do.

Ambassador Daniel V. Speckhard (ret.)
President and CEO



Great Gift Idea for Advent/Christmas

Families Celebrate Advent & Christmas is a colorful deck of cards that is full of rituals, prayers and reflections. Endlessly flexible for busy schedules, you can create a new after-meal ritual, use them as decorations, or carry them on the go. Explore the entire season from Advent to Christmas through Epiphany. These make a great gift for your grandchildren, families and friends. We have extra copies at church. If you are interested, contact the church office (369-5552). Suggested donation is \$5 per item.



**Christmas Program at
Good Shepherd
Sunday, December 15th 2019
at 9:30am**

Join us for a festive worship service led by our children and youth.



GOOD SHEPHERD LUTHERAN CHURCH

Youth OWL Night

Program includes:

- Games
- Service Project
- Christmas Caroling
- Night Hikes
- Movies
- all night snacks and breakfast.

For youth going into

5th grade and older



We STAY UP All night.

December 20 (Friday) 5:30pm to

December 21 (Saturday) 9am

If you have any questions, please contact the church office



Good Shepherd Lutheran Church

118 E. Mason Street, Lena

Phone: 815-369-5552

E-mail: goodshepherdlc@mediacombb.net

Facebook: [GSLCLenaLL](https://www.facebook.com/GSLCLenaLL)

*Please bring your
friends, favorite
game and
a snack to share.*



*We are also looking for adult volunteers to come in for 2 hours shifts. If you are interested, please contact us.



Thank you
Beth Martin, Donna Gullickson,
Cindy Doubler,
Darlene Aurand, Kelsey Albrecht,
Vivian Hesselbacher, Deb Hessel-
bacher and Shirley Fox for help-
ing with the
October Newsletter.



Prayer Chain:
If you have a request for the Prayer Chain,
please call the Church Office at 815-369-5552.

*We lift up the following loved ones in
assisted-living facilities/ nursing homes, and the homebound,
etc. in prayer: Lois Paulsen and Fern Harnish. They would love
to hear from you. Consider visiting, calling, or sending them
a note Please call the church office if you need their address.*

*God writes the Gospel not in the Bible alone, but also on trees,
and in the flowers and clouds and stars. Martin Luther*

Attention: Committee Chairpersons,

It won't be long and we will be into 2020. Chairpersons please start to look at your committee work this 2019 and write up your yearend report and turn it in to Betty in the secretary's office. We need to put these into the Annual Report folder.

Please submit your reports to the office by December 10th, 2019. Annual Meeting is scheduled for February 2nd, 2020.

Thanks to everyone serving on the numerous committees that we have here at Good Shepherd. Using your time and talents help to keep all of our programs going to do God's work.

Peace,
Denny Luke,
Congregational Council President



Each year, Good Shepherd's chancel is decorated with poinsettias for the Christmas Services. You may order poinsettias in memory or in honor of a loved one or in celebration of the birth of Jesus! Orders must be placed by December 8th. Cost will be \$12.00. Please complete the form below and mail it or drop it off at the church office.

Thank you!

Poinsettia Order

Given by: _____

phone # : _____

Given (check one)

___ in memory of... ___ in honor of...

Name (s) _____



Good Shepherd Lutheran Church Members and Friends,

Here we are near the end of 2019 and your Church Council asks for your help. This has been a very trying year financially. At the end of September we find ourselves in a very deep hole. We no longer have any funds in our revolving cash account and we face a shortfall of \$9,000 to \$10,000 in keeping up with our expenses. This is a real problem that your council is facing.

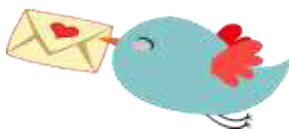
So, the Council is asking again to prayerfully look at your life at Good Shepherd and see how you can help out with our financial difficulties.

It is going to be very hard for the finance committee to try and work up a budget for 2020. Please consider filling out a pledge card for 2020 to help the committee with some guidelines.

At the Congregational Meeting coming up on February 2, 2020 we should be looking at some options as to how to try to become more financially secure.

Everyone please pray for Good Shepherd Lutheran Church. Thank you very much for your past, present and future support.

God's Blessings to each and everyone of you.
Good Shepherd Congregational Council



New offering envelopes

Coming in 2020 –

New offering envelope numbers

Contact Sheila if you have questions or concerns.

815-369-5101 or 815-297-3044

Need a ride to church on Sunday?

Call: Donna Gullickson 369-4708

We love worshipping with you, and we want to help make sure you can get here to join us! If you are interested in being added to the list of available drivers, please contact the church office @ 369-5552.





Hannah Circle will meet on Thursday, November 7th, at 9:00am at the home of Rene' Johnson, 621 Deer Trail Drive, Lena, IL. Rene' is the Bible Study Leader, this will be a potluck.

We continue our Bible Study -“Poetry of the Old Testament” by Anna Madsen, with Session Two: “The ache of grief” in the October, 2019 Gather Magazine. We will explore Lamentations 2:10-22, 5:19-22, Psalm 77, Psalm 25:12-22 and Psalm 126.

All are welcome to join us. Our sessions are very informal. You can pick up a copy of Gather Magazine from the book rack outside the church secretary's office, or contact Rene' Johnson or Pastor Miho to get a copy or have the magazine sent to your home.

*We will collect Thankofferings at our November and December meetings.******

As of October 3, 2019 this is our financial status.

We have a total of \$1821.49 in our checking account; it breaks down as follows—Piece Corps has \$1232.80 and WELCA has \$588.69.

Dear members of Good Shepherd Lutheran,



May the God of hope fill you with all joy and peace as you trust in him, so that you may overflow with hope by the power of the Holy Spirit. –Romans 15:13

Lutheran Outdoor Ministries Center, (LOMC), is the Church in the outdoor setting where seeds of faith are sown with our campers. These seeds grow to bless the Church with faith-filled servants. The Holy Spirit dwells in us, and empowers us with spiritual gifts. We thank you for donating your time, talents and resources to LOMC. The many new pillows, quilts and new towels are great additions to our camp. The pillows will allow guests to rest comfortably night after night. The many quilts will be great for our quilt fest coming up. The new towels will be used by campers.

We are grateful for your partnership in this ministry. Thank you for inviting us to your church and into your family of faith. Michelle and Adriana enjoyed visiting and we so appreciate your generosity and hospitality!

*With much appreciation,
Rob Gieraltowski
Executive Director*

Highlights from October Council Meetings

- J. Andrews presented the treasurer's report which included a September electric bill of \$151.71 and gas bill of \$138.26. The report was approved following a motion from C. Hudik and seconded by V. Gordon.
- Pastor's report included discussion on a potential confirmand activity in November and pastor's involvement in the DEITF – a synod based task force, which will meet Nov. 13. Pastor also received permission to investigate participation in the Lena Park District's Truck or Treat family event planned for Oct. 19 at Lions Park. There is no cost for the church's participation. K. Patterson moved to accept the report and B. Raymer made a second. All approved.
- Committee reports were given with highlights of a Martin Luther birthday celebration Nov. 10. Other local churches will be invited to share in the event. Council asks that members return their pledge and time and talent cards as soon as possible to aid in budget planning. K. Patterson provided Sunday School and Confirmation updates along with plans for a children's Christmas program. A trip to LOMC Autumn Festival Sat. Oct. 12 is planned for anyone interested.
- T. Gordon advised a handicapped seating area has been established in the sanctuary. Also, donors of memorial funds designated for sanctuary carpet may be asked if the funds could be used for carpet in the foyer and steps in the Mason Street entry. Carpet in that area is worn. He also suggested updates in lighting fixtures and bulbs may be investigated for cost saving benefits as well as a potential rebates from Com Ed. The Men's Ministry steak fry is set for October 26.
- Cost-saving measures for newsletter distribution were discussed. Members may choose to have the letter emailed rather than delivered by postal service. Additional copies will be available at the church and some copies may be mailed as usual. The current method of mailing all newsletters is \$125 per month. Costs could potentially be reduced to \$50 per month. Final decision was tabled until the November meeting.
- Church secretary Betty Allen will be asked to seek quotes for a color photo copier. Discussion on replacement will be held at the next meeting.
- D. Luke said a request for a bid for tuning of the organ will be sought from Fabry Pipe Organs, Antioch, IL. The organ has not been tuned for 4-5 years and it is in need of attention. The annual Christmas Tour of Homes was discussed. D. Meier suggested the dates of Dec. 13-14 are possibilities. The event is co-sponsored by Lena Business and Professional Association and is a benefit for the local food pantry.

The date of Feb. 2, 2020 has been selected for the annual meeting with a motion by V. Gordon and second by B. Raymer.

Council adjourned with a motion by T. Gordon and second by V. Gordon. Members closed with recital of The Lord's Prayer.

Treasurer's Report from Treasurer Jay Andrews

Income, September 2019	\$ 8,530.68
Expenses, September 2019	\$ 9,866.52
Net Income (Loss)	\$(1,335.84)
Income, Year to Date 2019	\$87,205.16
Expenses, Year to Date 2019	\$108,313.68
Net Income (Loss)	\$ (21,108.52)

End of year contributions

To facilitate the year end closing of the church books and statements of contributions, it would be appreciated if any year end contributions could be received by the last Sunday of December. All contributions received after December 29th, 2019 will be applied to 2020 year. This will greatly help our congregational treasurer and financial secretary.

Thank you,
Jay Andrews, Treasurer
Sheila Keene, Financial Secretary

Good Shepherd will be participating in the Christmas parade in downtown, Lena on **Friday December 6th**.

The parade starts at 6pm.
We are looking for helpers and riders. If you are interested, talk to Kristy or Pr. Miho.



Waiting for Jesus through Advent
Advent starts on December 1st. As you wait for Jesus during Advent, you may try the Nearness Advent Study 2019 and/or an Advent calendar. Both are resources from ELCA World Hunger and will be available in church.



November 2019 Good Shepherd Lutheran Church Lena, IL

Sun	Mon	Tue	Wed	Thu	Fri	Sat
Communion Set-up/Clean up November 3—Bill & Jean Engel November 10—Don & Lisa Wienand November 17—Bill & Jean Engel November 24—Krista Keene					1 All Saints Day	2
3 9:30am Worship Service-All Saints Sunday 10:30am Fellowship 10:45am Sunday School 11:00am Confirmation Class 11:00am Choir Practice 2:30pm Lena Living Center service 5:00pm Chime Practice	4	5	6 8:00-11:30am Piece Corps Quilters	7 9:00am Hannah Circle at the home of Rene' Johnson	8 Go & Cheer! Fall HS Play@ Le-Win, 7:30pm	9 Go and Cheer! Fall HS Play @ Le-Win, 7:30pm
10 9:30am Worship Service 10:30am Fellowship 10:45am Sunday School 11:00am Choir Practice 5:00pm Chime Practice	11 Parkinson Support Group, Holiday Pot Luck, 12:00m bring a dish to pass. No speaker. <i>Veterans Day</i>	12 9:45am Hymn Sing Lena Living Center 6:30pm Council Meeting	13 8:00-11:30am Piece Corps Quilters 9:00am-12:00pm Pr. Miho at NW conference meeting, First Lutheran, Pecatonica 1:30pm-3:30pm Pr. Miho at DEITF meeting, Immanuel, Rock Falls	14 12:00pm Friendship Club Potluck lunch and entertainment, Take Two—Ray and Jane	15	16
17 9:30am Worship Service 10:30am Fellowship 10:45am Sunday School 11:00am Confirmation Class 11:00am Choir Practice 5:00pm Chime Practice	18	19	20 8:00-11:30am Piece Corps Quilters	21 1:00pm Good Shepherd at Friendship Center Devotions & Dessert	22	23
24 9:30am Worship Service-Christ the King HAT Sunday 10:30am Fellowship No Sunday School 11:00am Choir Practice 5:00pm Chime Practice	25	26	27 8:00-11:30am Piece Corps Quilters	28 Office Closed 	29	30

November Worship Volunteers

November 3rd

Lector: Michelle Andrews
Acolyte: Jared Runkle
Assisting Minister: Wayne Kurth
Worship Assistant: Janis Kurth
Communion Assistant: Janice Kurth and
Tena Rackow
Communion Ushers: Paul and Shirley Fox
Sound System: Jay Andrews and open
Greeters: Virgil and Joanne Martin
Troy and Cindy Doubler
Ushers: Robert and Sharon Schlachter,
Don and Lisa Wienand
Elevator Operator: Denny Luke

November 10th

Lector: Terry Hart
Acolyte: Jacob Runkle
Assisting Minister: Jay Andrews
Worship Assistant: Vivian Hesselbacher
Communion Assistant: Beth Martin and
Denny Luke
Communion Ushers: Gary and Cynthia Boeke
Sound System: Troy Doubler and open
Greeters: Robert and Sharon Schlachter,
Chris and Angie Brinker
Ushers: Jim Swain, Troy Keene,
Larry Fulfs and Andrew Martin
Elevator Operator: Donna Gullickson

November 17th

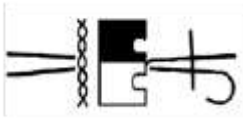
Lector: Marybeth Brinker
Acolyte: Lucas Fye
Assisting Minister: Sheila Keene
Worship Assistant: Sheila Keene
Communion Assistant: Marybeth Brinker and
Shirley Fox
Communion Ushers: Jerry and Beth Martin
Sound System: Troy Doubler and open
Greeters: Jerry and Beth Martin,
Gary and Cynthia Boeke
Ushers: Denny Luke, Virgil Gordon,
Bari Raymer and Tim Gordon
Elevator Operator: Anna Patterson

November 24th

Lector: Sue Diddens
Acolyte: Ethan Fye
Assisting Minister: Sunday School Youth
Worship Assistant: Tena Rackow
Communion Assistant: Troy and Cindy Doubler
Communion Ushers: Chris and Angie Brinker
Sound System: Denny Luke and open
Greeters: Bill and Jean Engel,
Donna Gullickson, Bari Raymer
Ushers: Gene and Vivian Hesselbacher,
Virgil and Joanne Martin
Elevator Operator: Taylor and Kristy Patterson



Please mark your calendars for the dates that you have been assigned, if you cannot serve on the day that you have been assigned please switch with someone and/or call the church office by Tuesday of the week that you are to volunteer so that arrangements can be made. 815-369-5552



Good Shepherd Lutheran Church
118 East Mason St.
Lena, IL 61048
GoodShepherdLena@outlook.com

*The Good Shepherd cares for us.
He gives His Life for us and to us.
We give and use our lives in love,
care and service of one another.*



NEWSLETTER DEADLINE
for the December 2019 Newsletter
is November 15th, 2019.
Thank You!

NON-PROFIT ORG
US POSTAGE
PAID
LENA, ILLINOIS
PERMIT #1

ADDRESS SERVICE REQUESTED

WORSHIP SCHEDULE

Sunday Worship Service 9:30 am

Pre-K & K Sunday School after Children's Message

Fellowship Hour 10:30 am

Sunday School 10:45 am

CHURCH OFFICE 815-369-5552

Pastor Pastor Miho Yasukawa

Church Secretary Betty Allen

Month's Highlights!

All Saints Sunday

Hannah Circle 9:00am

Parkinson Support Group Holiday Potluck, 12:00pm

Hymn Sing at Lena Living Center, 9:45am

Friendship Club Potluck & entertainment, 12:00pm

Friendship Center, Devotions and Desserts, 1:00pm

Christ the King Hat Sunday Worship

Office Closed Thanksgiving

November 3
November 7
November 11
November 12
November 14
November 21
November 24
November 28

For More Good Shepherd
Pictures and Highlights go to
Facebook: "GSLCLenell,"